

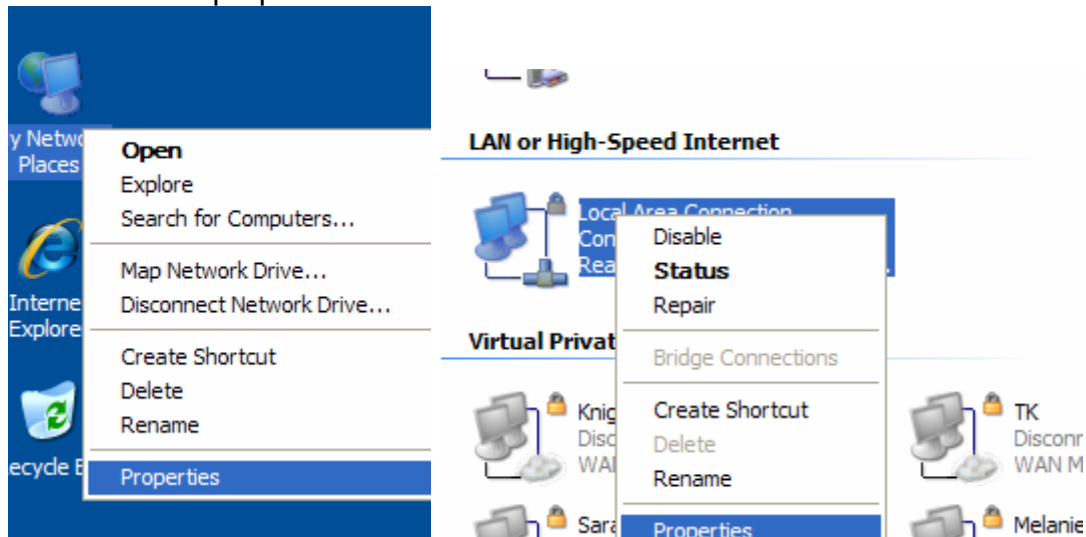


2. Setting up port forwarding for UltraVNC

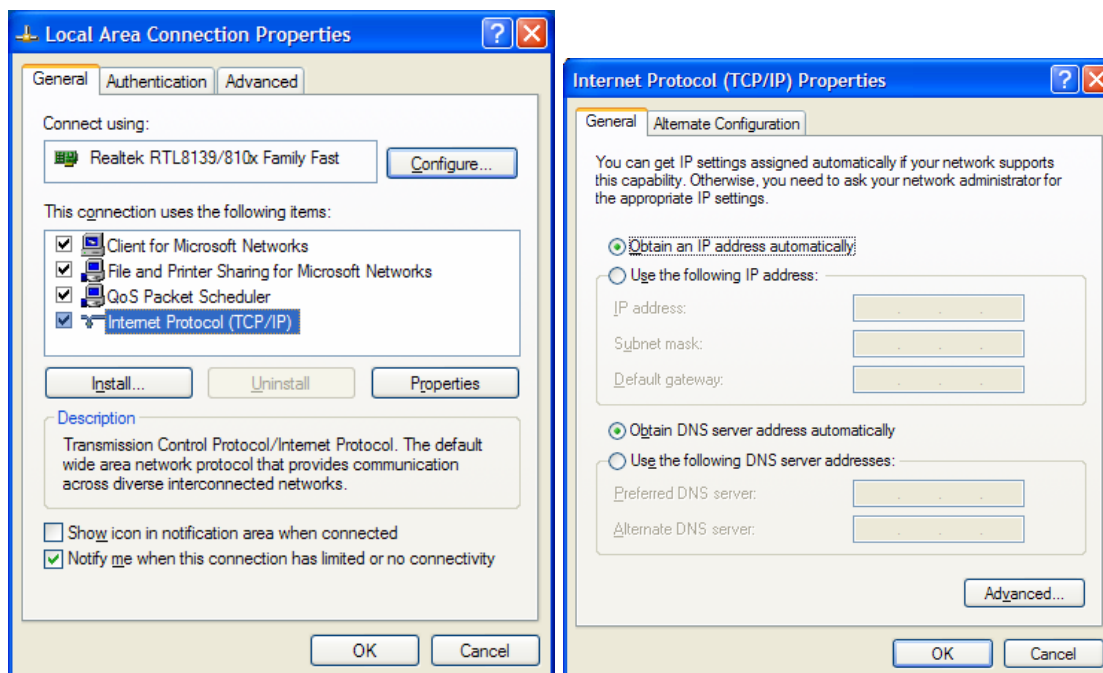
2.1 Make sure that the computer that we will dial in on has a static IP address:

In order to open your network card properties, find “My Network Places” (this will either be on the desktop or in the start menu). Right click on this and click properties.

This Opens the “Network Connections” folder. In here find “Local Area Connection” and right click and click properties:

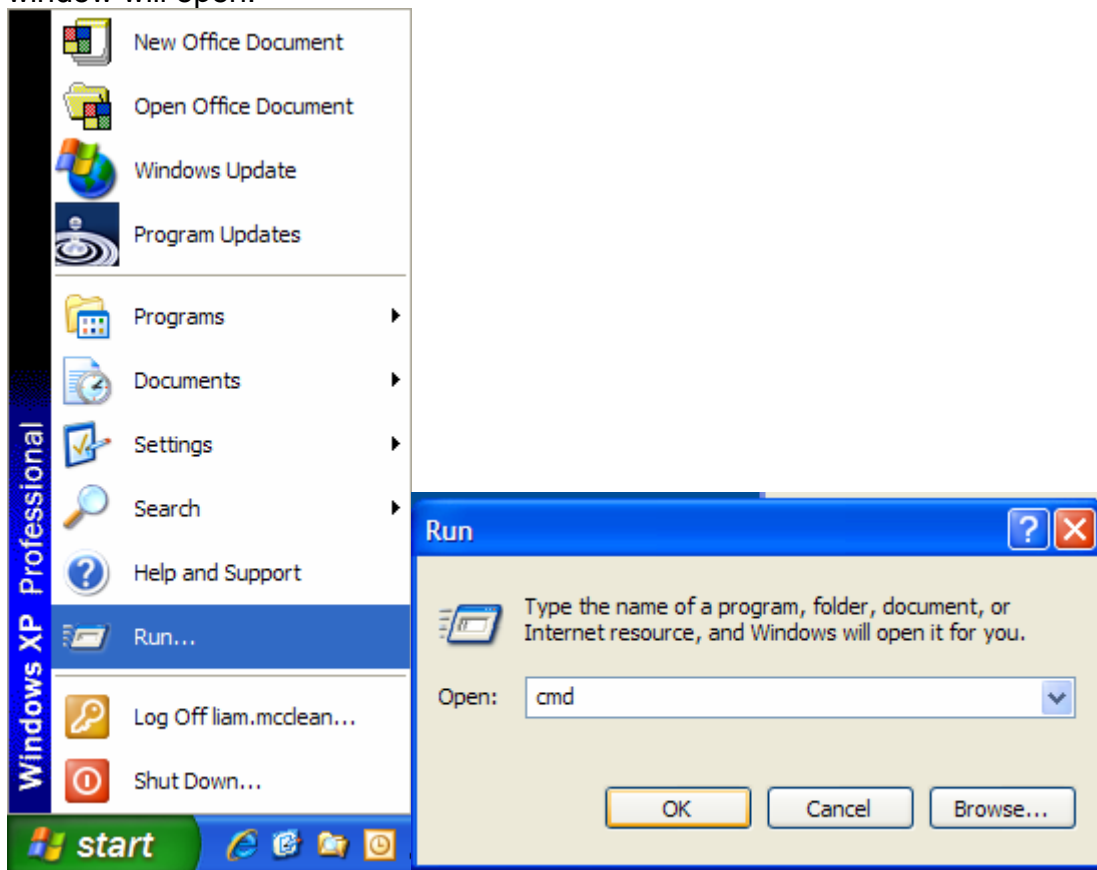


This opens your connection properties. In here select “Internet Protocol (TCP/IP) and click properties. This should bring up the properties shown below. If “Use the following IP address” is selected then you already have a static IP, Note the IP address and default gateway, and move onto **2.2 Connecting to your ADSL router:** If this option is not selected (as shown) then you have a dynamic IP address and will need to follow the steps below.

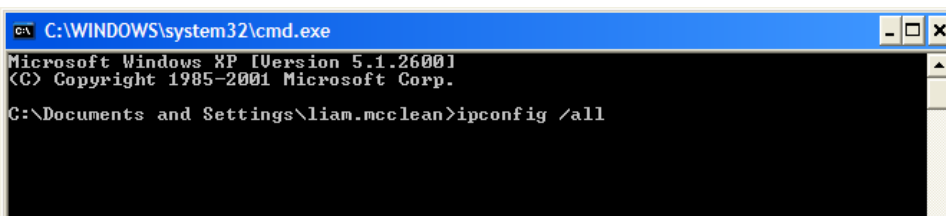




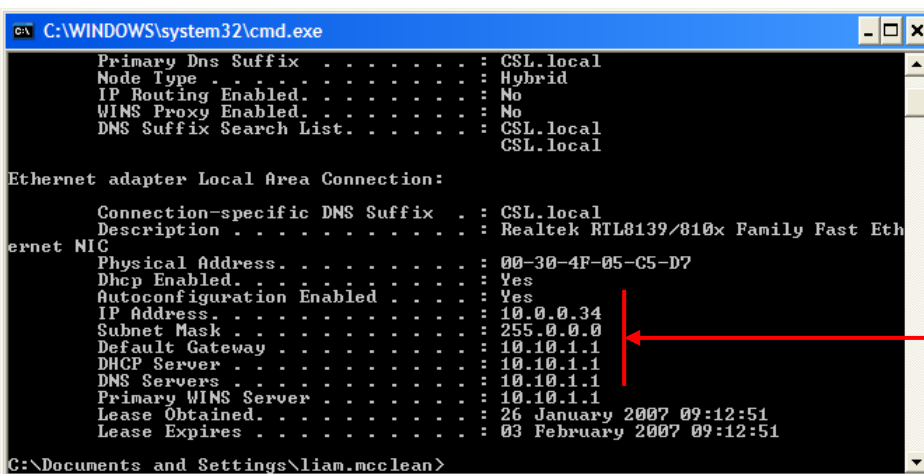
Open your start menu and click run. In the box that comes up type cmd and click OK, a black window will open.



In this black window type ipconfig /all and press return.

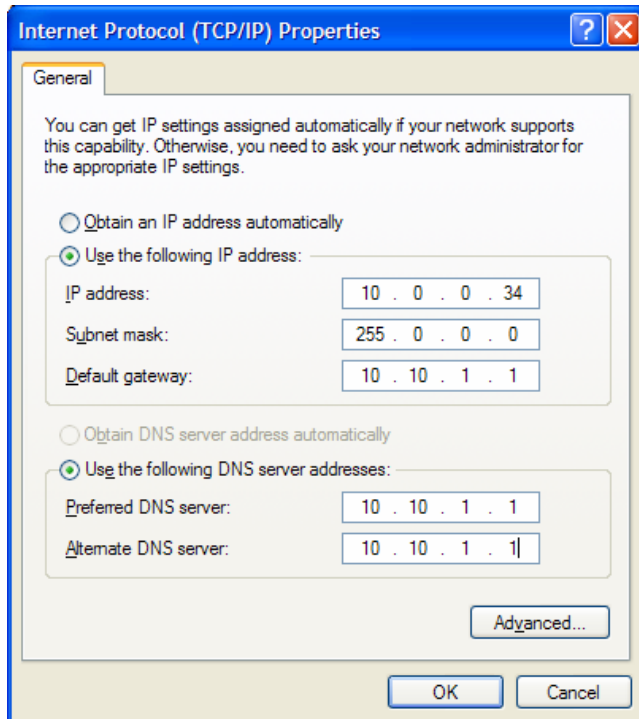


This will bring up a list of settings that you will need to copy, as described below.



The settings you will need to copy can be found in this section here

In the “Internet Protocol (TCP/IP) Properties window click “Use the following IP address”. Enter the values from the black window that correspond to the same names. Also click “Use the following DNS server addresses” and fill in this information. Make a note of the “IP address” and your “default gateway”, as you will need these later on. Then click OK to this and the following windows.



Open up internet explorer and make sure that you can browse the web. If you can do this then you have successfully fixed your computers local IP address.

2.2 Connecting to your ADSL router:

Find your gateway address – it is listed as Default Gateway on the screen above.

Open internet explorer and type <http://<GatewayAddress>> eg. <http://10.10.1.1> . This should open up the web interface of your router.

Now you need to find the make and model of your router, and this website will help you forward port 5900 to your machine.

http://www.portforward.com/english/routers/port_forwarding/routerindex.htm

This web site may appear a little daunting at first, but is fairly straightforward once you understand the navigation.

Firstly select your make and model of router by clicking on the correct model from the list shown.

Then we need to select from the list of software applications (don't be put off by the fact that games are listed) scroll down on the next screen and click UltraVNC on the right hand side of the page. Follow the instructions on this page. You should be forwarding port 5900 to the local IP address of your machine that was set up above (in the example above 10.0.0.34).

If you get stuck please call the support team and they will be pleased to assist.